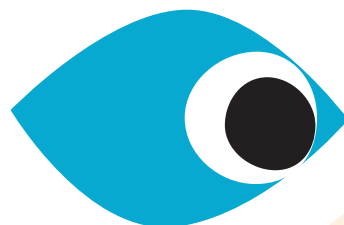


How can you be more Deaf aware?



Make sure you have the **person's attention** before you start speaking



Maintain **eye contact**



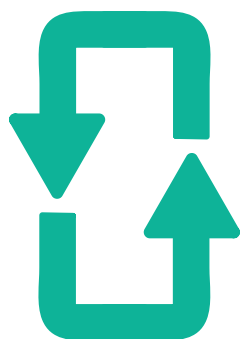
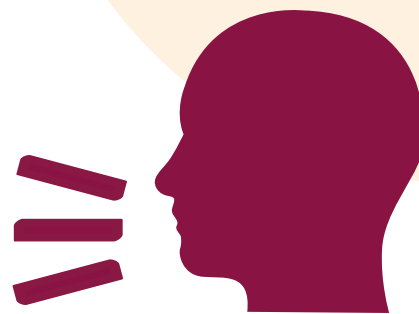
Don't shout.

It's uncomfortable for hearing aid users and appears aggressive

Avoid environments with excess noise / Choose somewhere with **good lighting**



Speak clearly, not too slow or too fast. Don't cover your mouth



Don't keep repeating the same word, explain what you're trying to say differently