

Transforming Adult Social Care Programme Personal Budgets



Hilary Grime
Service Manager
**Sensory Impairment &
Physical Disabilities**
Jan 2010

Inspiring lives through real choice: your choice



**TRANSFORMING
ADULT SOCIAL CARE**

Oxfordshire's vision

To inspire people to live successful and independent lives through information, support, communities and real choice.

Inspiring lives through real choice : **your choice**



What can this mean for people with Hearing Impairments?

Mr P's Story

- Mr P: painful feet ++ simple tasks needing standing are difficult.
- Mr P. has lost his hearing; he has become isolated and feels lonely at times. He has previously been known to the Hearing Impairment Team.
- With the assistance of his support broker, Mr P wrote his own support plan



Support plan example – Mr P

The assessment indicated that Mr P was going to need £180 a week for his care.

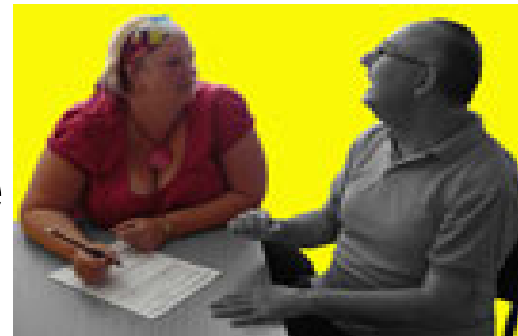
Because of his financial circumstances, his own contribution was established to be £50 a week, meaning £130 a week will be paid by Oxfordshire County Council.

Mr P wrote his own support plan with the help of his daughter and a support broker:

- **What is important to you?**
 - Independence
 - Social interaction and relationships
- **What needs changing?**
 - Help with personal care and around the house
 - Lip reading classes
- **How will you be supported?**
 - By my children, my care agency, my neighbours
- **(extracts only – full details on website)**

New Opportunities? Or just the same?

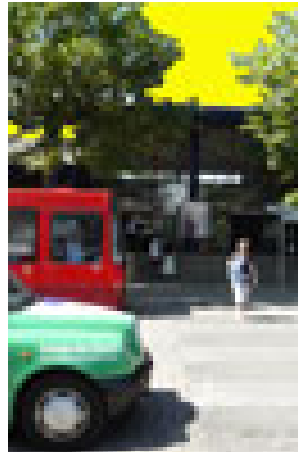
- People with Hearing Impairments should have the same opportunities as everyone else
- People can take control, *if they wish to*
- In Oxfordshire, Hearing Impairment services from Social & Community Care will remain specialist
- Legislation eg Disability Discrimination Act still applies, so access to BSL Interpreters should not change within social or health care



How can we be creative?

Traditional = day centre, home care

Instead:



Football? Travel? Leisure courses?

- Others can help – opportunities for skilled and knowledgeable voluntary organisations to act as brokers?

Or become personal assistants?







Any restrictions?

- You must meet the eligibility criteria for services for the local authority (known as Fair Access to Care Services – FACS)
- The way in which you use your money must meet your assessed needs; your plan must be



Safeguarding

Safeguarding is paramount; if you or others may be at risk, the authority may need to support decision making

www.safefromharm.org.uk



What is adult abuse?

Adult abuse is when a vulnerable person is treated in a way that makes them feel frightened or unhappy, harms, hurts or exploits them - particularly by someone they know or should be able to trust.

www.safefromharm.org.uk



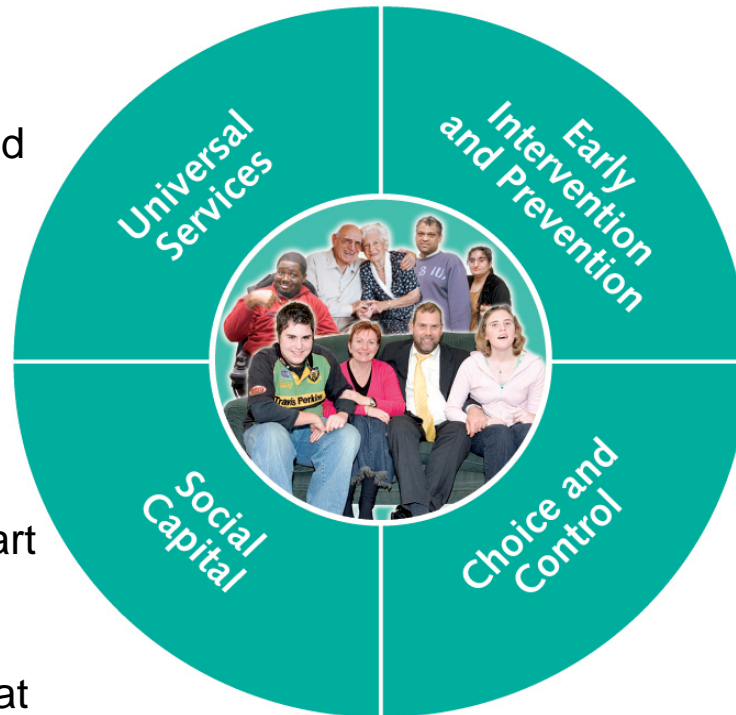
Putting People First

Access to universal services

transport, leisure and education as well as information, advice and advocacy

Social Capital

ensuring everyone has the opportunity to be part of a community and experience the friendships and care that can come from families, friends and neighbours.



Prevention and early intervention

helping people early enough or in the right way, so that they stay healthy and recover quickly from illness

Choice and control

People who need support can design it themselves, understanding quickly how much money is available for this – the RAS, and having a choice about how they receive support and who manages this.

Challenges/opportunities (1)

- Support to all people who require adult social care services; client *and* carers with hearing impairments, d/Deaf, hard of hearing and those with dual sensory loss
- Shift to promoting independence and prevention
- Working with key partners – PCT, third sector eg Deaf Direct Oxford, Audiology
- Working with other County Council colleagues eg Leisure, Education, Transport, Fire & Rescue, Disability Equality team

Challenges/opportunities (2)

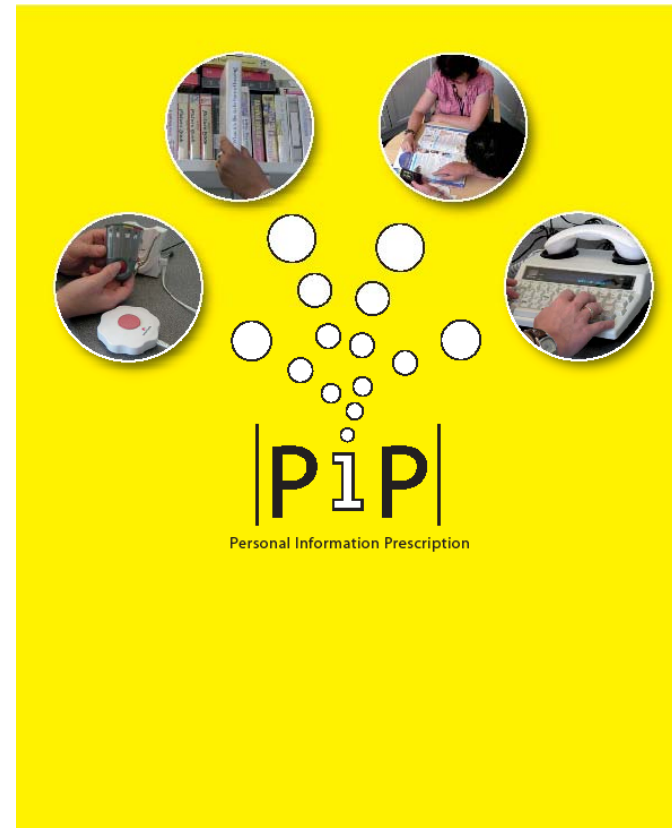
- Increasing numbers of people will need support, especially older people
- How do we keep brokers up to date and informed re hearing impairments? What role can national & local vol orgs play?
- Dual sensory loss in older age groups increasing – could personal budgets fund communicator guides?
- This is about whole system change; everyone needs to think differently

What is happening in Oxfordshire *now?*

- Transforming Adult Social Care programme – staff and budget in place
- Pilot site for Mental Health and self directed support; opportunities for hearing impaired people with mental health support needs?
- Oxfordshire PCT now a personal budget national pilot site

Information Prescriptions

- Already in place for Hearing Impairment clients via Deaf Direct Oxford, Social & Community Services, Audiology and some County Council library services.
- Now extending to many other services eg dementia, carers and strokes



pip-ox

DH Department of Health

Oxford Radcliffe Hospitals **NHS** Trust

OXFORDSHIRE COUNTY COUNCIL
www.oxfordshire.gov.uk

Deaf Direct Oxford

OXFORDSHIRE COUNTY COUNCIL
www.oxfordshire.gov.uk
Working for you



TRANSFORMING ADULT SOCIAL CARE

Recent achievements (1)



Support with
Confidence
OXFORDSHIRE COUNTY COUNCIL

The **Support with Confidence** scheme for Approved Personal Assistants launched

Planning of the new **User Led Organisation**, as umbrella organisation for a number of voluntary organisations



Recent achievements (2)

- We are researching **payment cards** to make it easier for people to use their personal budgets
- 250 people already have personal budgets, 15th Jan 10. **500 existing users of care and support to be allocated a personal budget by April 10**
- Information Standard achieved, the first Local Authority to do so



Age Concern says...

“Older people and other clients groups are getting more choice and control in the support they receive”

“local organisations are working more closely together than they ever had in the past”

“New ways of delivering internal systems have never been so closely looked at, made to be transparent and importantly radically changed and be directed by the service user rather than the other way round”

March 2009



Questions



Hilary.Grime@oxfordshire.gov.uk

or

Transforming Adult Social Care Team

4th Floor

County Hall

Oxford

OX1 1ND

tasc@oxfordshire.gov.uk

www.oxfordshire.gov.uk/transformingsocialcare

www.takingcontroloxon.org.uk



**TRANSFORMING
ADULT SOCIAL CARE**